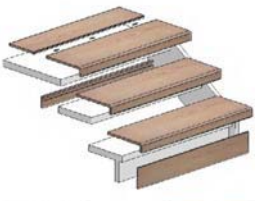


Stair Renovation—Solid Oak oiled



Renew your stairs with our simple DIY renovation system!

Solid Oak Treads with risers for closed stairs or with a back edge profile for open stairs!

Just simply glue these 15 mm thick treads on top of your old ones and get a new interior look!

In our range you have whatever you need to do a successful renovation!

Also suitable to assemble on top of concrete or tiled stairs!!

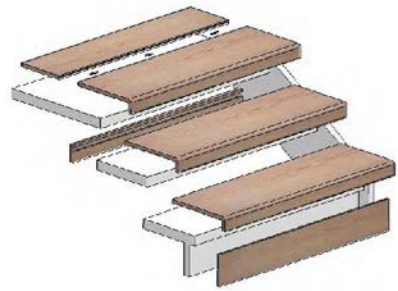




PANELTERRA

Old Stairs will look like new!

The range consists of:



- Stair treads with a front lip (covers maximum thickness 42 mm of old tread)
 - 1000x307 mm
 - 1300x370 mm
 - 1450x437 mm
 - 1600x574 mm double lip
- Joining part without lip 1300x200 mm for stair platforms or landings
- Rear edge profile for open stairs
 - 1300x70 mm
 - 1600x70 mm
- Stair riser
 - 1300x160 mm
 - 1600x160 mm

How to renovate an old, closed stair.



Phase 1

- Store the material in room temperature for at least 24 hours before starting the work. When material has been stored at below zero temperatures, add another 48 hours for acclimatization.



Phase 2

- For the best glue adhesion result:
- Remove potential carpets and glue residue
 - A lacquered surface should be sanded with Grit 60 sand paper



Phase 3

- Remove front profiles and similar
- Sand uneven surfaces so that the old tread becomes even

BEFORE

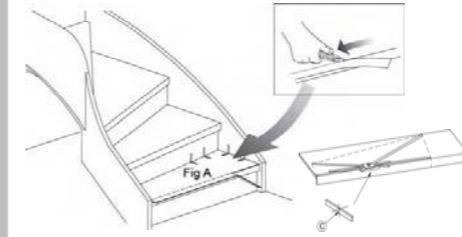


AFTER



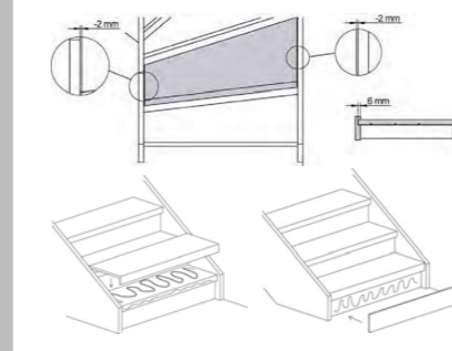
Phase 4

- For each tread there is a template enclosed. This makes it easy to draw and copy the tread in order to get the correct measurements.
- Alternatively, rent a tread spider from your dealer to measure the treads.
- NOTE! Leave a 2 mm expansion gap on both sides of the treads to allow movements later at different temperatures and humidity. The tread may otherwise crack and deform.
- Cut the treads to the desired size



Phase 5

- Glue the treads to the old treads
- Use plentiful of type MS Polymer glue
- Use clamps or weights to put the tread under pressure
- About 100 ml glue should be sufficient for 1 tread and 1 riser



Phase 6

- Leave the treads to rest for 24 hours before using the stair
- If necessary use matching putty to fill open joints towards the stringers.
- The treads are factory oiled but need a finishing oil treatment after assembly.
- Sand the surface lightly with a fine paper and then oil it with a good quality flooring oil, preferably with wax to build up a long lasting protection. Follow the oil manufacturers' instruction.
- Maintain your stair regularly as soon as it looks dry with the same type of oil. About once per year depending on how much

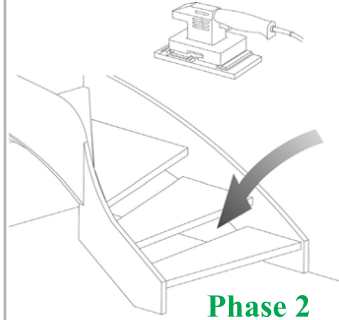
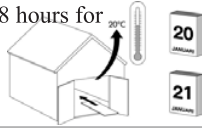


How to renovate an old, open stair.



Phase 1

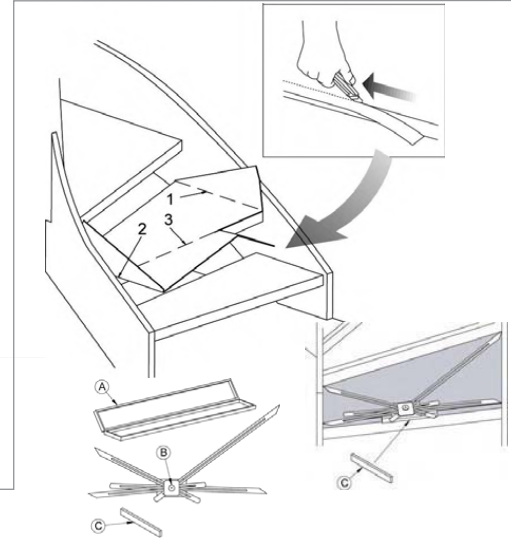
- Store the material in room temperature at least 24 hours before starting the work. When material has been stored at below zero temperatures, add another 48 hours for acclimatization.



Phase 2

For the best glue adhesion result:

- Remove potential carpets and glue residue
- A lacquered surface should be sanded with Grit 60 sand paper



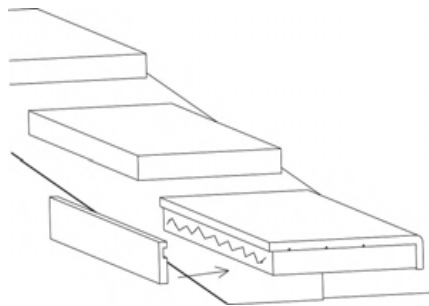
Phase 3

- For each tread there is a template enclosed. This makes it easy to draw and copy the tread in order to get the correct measurements.
- Alternatively, rent a tread spider from your dealer to measure the treads.
- NOTE 1: Leave a 2 mm expansion gap on both sides of the treads to allow movements later at different temperatures and humidity. The tread may otherwise crack and deform.
- NOTE 2: Also add 6 mm of the depth of the stair in order to fix the rear edge profile later.
- Cut the treads to the desired size.



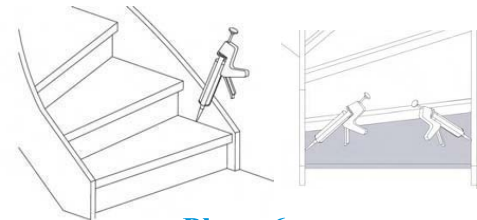
Phase 4

- Glue the treads to the old treads
- Use plentiful of type MS Polymer glue
- Use clamps or weights to put the tread under pressure
- About 100 ml glue should be sufficient for 1 tread and 1 rear edge profile



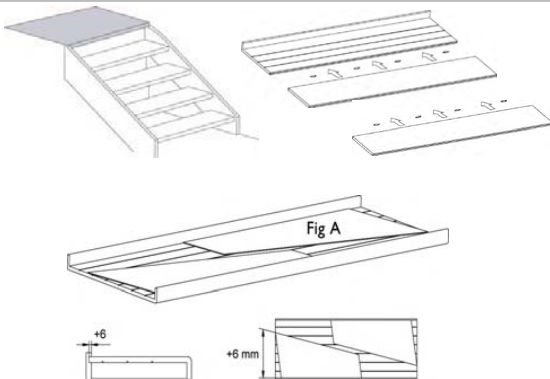
Phase 5

- Rear Edge Profile
- Measure the width for each tread and cut the rear edge profile
- Glue the rear edge profile with the same type of glue as for the tread
- Use clamps in order to put the rear edge profile under pressure



Phase 6

- Leave the treads to rest for 24 hours before using the stair
- If necessary use matching putty to fill open joints towards the stringers.
- The treads are factory oiled but need a finishing oil treatment after assembly.
- Sand the surface lightly with a fine paper and then oil it with a good quality flooring oil, preferably with wax to build up a long lasting protection. Follow the oil manufacturers' instruction.
- Maintain your stair regularly as soon as it looks dry with the same type of oil. About once per year depending on how much it is used.



This is how you join.....

When having a rest platform, you may join the top tread with 1 or more Joining parts 1300x200 mm. Do this assembly by using joining biscuits. NOTE! Do not glue the biscuits at the joint. Glue the parts to the flooring platform with the same type of glue and put under pressure.

Treads with double lip.....

This one is to be used when you have very wide treads. Alternatively it can be cut in the middle to get 2 straight treads or cut diagonally in order to get 2 treads for a turned stair as per Fig A.